

FOR SALE or LEASE

2422 W. Main Street , St. Charles, IL 60175



Real Estate Brokerage &
Asset Management



Retail/office space just west of Randall Road. Excellent Main Street (Rte 64) exposure and signage.

For Sale in Bulk

- ◆ **30,000 S. F. Multi Tenant Building**
- ◆ **Redeveloped in 2004 as a multi-unit condominium**

For Lease

- ◆ **Retail/Office Available**
- ◆ **1,000 sq. ft up to 4,694 sq. ft**

Amenities

- ◆ **Main St. (Rt. 64) exposure & signage**
- ◆ **Re-developed in 2004**
- ◆ **Other tenants include: Quiznos, Pizza Hut, Northwestern Illinois Assoc. & Judge Chiropractic**

Thank you for allowing Murray Commercial the opportunity to share this information and/or show you the above referenced property. This activity does not result in the Sales Associate acting as your agent. The Sales Associate is acting as the designated Agent for the Owner. As a result, the Sales Associate will NOT act as a Dual Agent or will NOT be acting as an agent on your behalf.

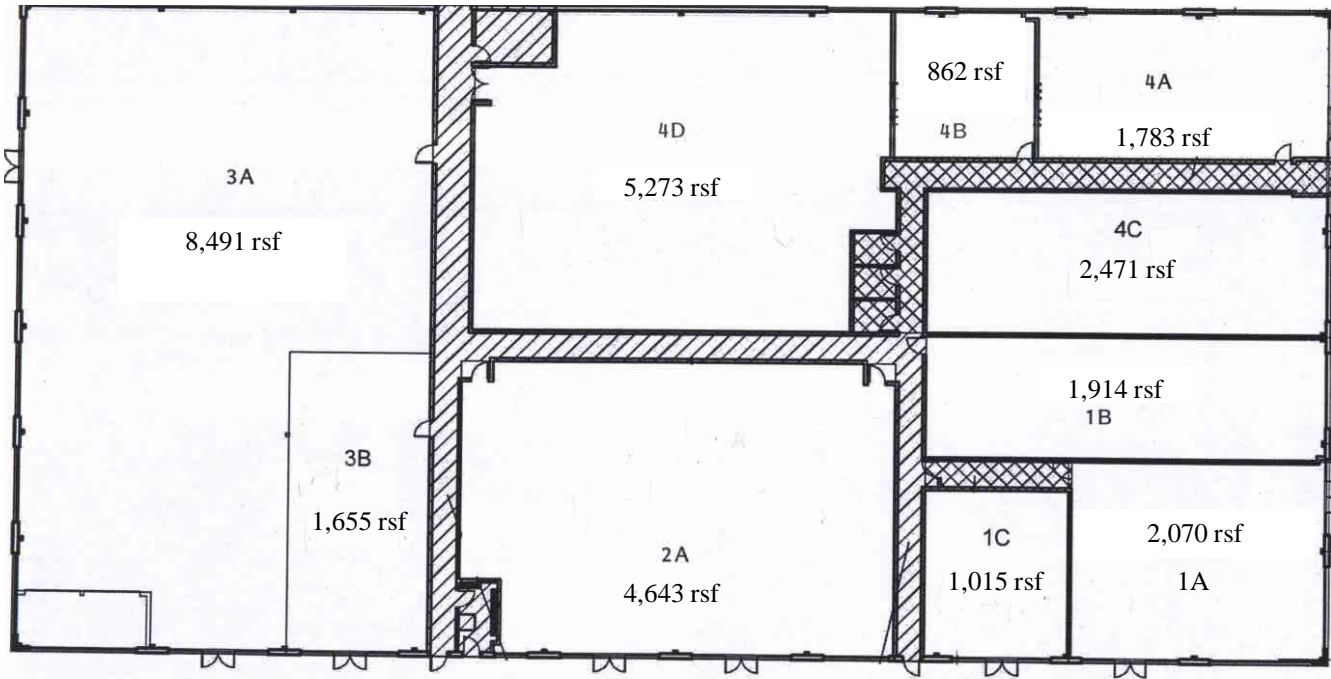
The information contained herein was obtained from sources believed to be reliable; however, Murray Commercial makes no guarantees, warranties or representations as to the completeness or accuracy thereof. The presentation of this property is submitted subject to errors, omissions, change of price or conditions prior to sale, lease or withdrawal without notice.

**For more information please contact:
630.513.0173 or visit www.murrayproperties.net**

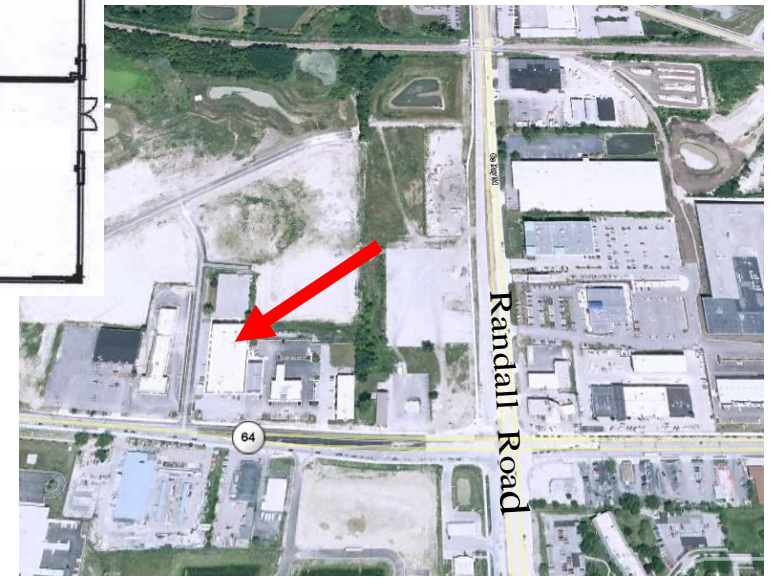
FOR SALE or LEASE



2422 W. Main Street , St. Charles, IL 60175



- ◆ Retail/office space just west of Randall Road.
- ◆ Excellent Main St (Rte 64) exposure and signage.



**For Sale in Bulk
or
Retail/Office Available for Lease
1,000 sq. ft up to 4,694 sq. ft**

Thank you for allowing Murray Commercial the opportunity to share this information and/or show you the above referenced property. This activity does not result in the Sales Associate acting as your agent. The Sales Associate is acting as the designated Agent for the Owner. As a result, the Sales Associate will NOT act as a Dual Agent or will NOT be acting as an agent on your behalf. The information contained herein was obtained from sources believed to be reliable; however, Murray Commercial makes no guarantees, warranties or representations as to the completeness or accuracy thereof. The presentation of this property is submitted subject to errors, omissions, change of price or conditions prior to sale, lease or withdrawal without notice.

**For more information please contact:
630.513.0173 or visit www.murrayproperties.net**